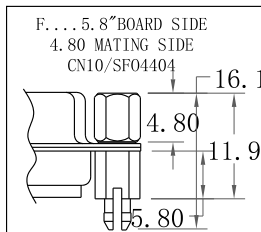
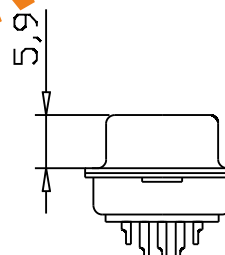
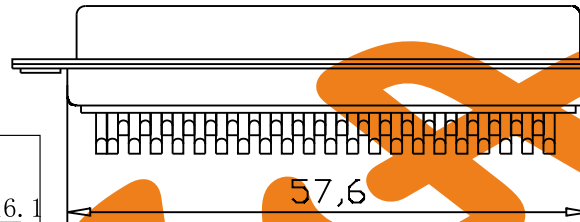
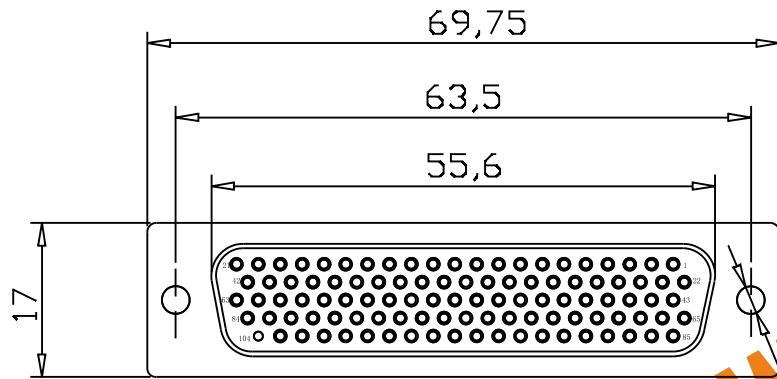
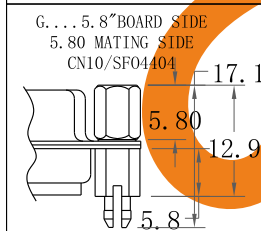


**ROHS COMPLIANT**

# D-SUB FEMALE High density Solder type Machine 104 Pin



NOTE: 4-40 FEMALE SCREW LOCK IS REMOVABLE

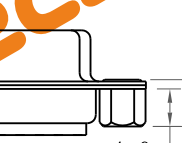


NOTE: 4-40 FEMALE SCREW LOCK IS REMOVABLE

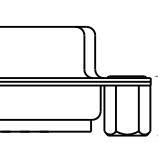
A... 3.01" HOLE



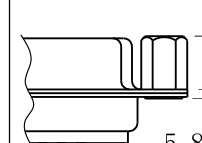
B... 4.0" (BOARD SIDE)-CN1



C... 5.8" (BOARD SIDE)-CN2



D... 5.8" (MATING SIDE)-CN8



ALL CLINCH-NUTS ARE 4-40 INTERNAL THREADS

TOLERANCE: ALL DIMENSIONS ARE ±0.25

ACCEPTS 28-24 AWG WIRE

## MATERIALS AND FINISH

SHELL: STEEL MATERIAL, FRONT SHELL NICKEL FINISHED  
BACK SHELL NICKEL FINISHED

INSULATOR: PBT THERMOPLASTIC, 30% GLASS  
FILLED, UL 94V-0 RATED, WHITE COLOR

CONTACT MATERIAL: BRASS  
CONTACT FINISH: FULL 2u" GOLD

## ELECTRICAL CHARACTERISTICS

CONTACT CURRENT RATING : 5.0 AMPS  
CONTACT RESISTANCE : 30 MILLIOHMS MAX.  
DIELECTRIC WITHSTANDING VOLTAGE : 1000 V AC MIN  
INSULATION RESISTANCE : 5000 MEGAOHMS MIN  
TEMPERATURE RATING : -55°C ~ +105°C

Ordering Code:

MHDB01 - F - X - X - X - X

①      ②      ③      ④      ⑤      ⑥

- ① MHDB Series
- ② Contact Type:  
M: Female
- ③ Contact NO. :  
S4=104Pin
- ④ Mounting Option:  
A: Ø3.05" HOLE, NO HARDWARE  
B: 4.0" 4-40 INSERT, BOARD SIDE  
C: 5.8" 4-40 INSERT, BOARD SIDE  
D: 5.8" 4-40 INSERT, MATING SIDE  
E: 5.8" 4-40 BOARD LOCK, BOARD SIDE  
F: 5.8" BOARD LOCK, BOARD SIDE  
4.80" SCREW LOCK, MATING SIDE  
G: 5.8" BOARD LOCK, BOARD SIDE  
5.80" SCREW LOCK, MATING SIDE
- ⑤ Insulation Color Code:  
B: Black G: Grey  
W: White L: Blue
- ⑥ Contact Plating  
T: Tin plated  
S: Selective Gold  
G0: Gold flash G1: 3u" Gold  
G2: 5u" Gold G3: 10u" Gold  
G4: 15u" Gold G5: 30u" Gold

Unless Otherwise specified tolerance  
X.±0.35  
X.X:±0.25  
X.XX:±0.20  
X.XXX:±0.15



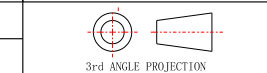
**ASA Electronic Co.**

SCALE: 1:1      UNIT: mm

Tel : (+98) 21 66 73 56 82 Mob : (+98) 912 03 161 02

DRAWN: zhuliu jun  
CHECKED: YANG

TITLE:  
D-SUB FEMALE High density Solder type  
Machine 104 Pin



DRAWING NO: MHDB01-FXXXXX  
PRODUCT NO: MHDB01-FXXXXX

13/9/5  
DATE